

# Barn Dingenhart, Frauenfeld

2024

---



The «Dingenhart» detached house project breathed new life into an old barn in a picturesque hamlet near Frauenfeld, creating an eye-catching building made of wood and exposed concrete.

## The project

In the small hamlet of Dingenhart, not far from Frauenfeld, a spacious single-family home was built in 2022 and 2023. The building impresses with its successful combination of wood and exposed concrete, which gives the structure a modern yet warm appearance. This showcase project for contemporary and authentic timber architecture is the result of close, interdisciplinary collaboration between architects and timber engineers. With great commitment, precision, and passion, every structural detail was carefully thought out and planned—a successful example of the design and construction possibilities of timber construction.

## The construction method

The building was planned and constructed as a classic timber frame structure with a solid central zone. In order to create the large and airy rooms at the two ends of the building, a grid of slender laminated beams made of Swiss beech wood was used. The roof was planned and constructed as a raftered roof with a cold screed in the style of traditional farmhouses.

## The challenge

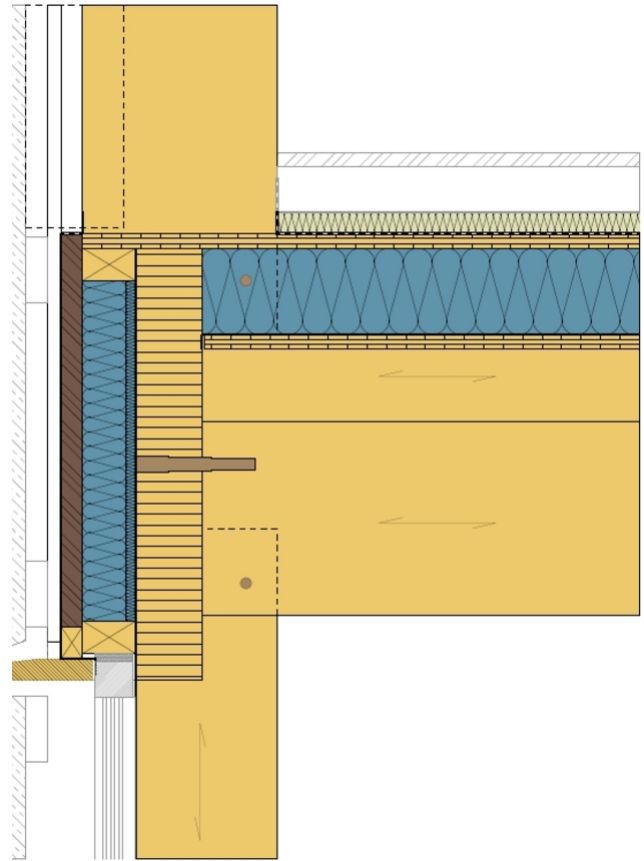
As the principle of «no cover parts and reducing the use of steel to a minimum» was the top priority in the planning from the outset, all details had to be solved with the utmost conscientiousness and creativity.



Attention to detail: well thought out down to the smallest corner



Roof cutout with a view of the Thurgau landscape



No steel parts: Detailed solution with beech nails

#### Construction costs

- BKP 1-9: CHF 4.9 million
- BKP 2: CHF 4.5 million
- BKP 214: CHF 1.2 million (without facade)
- Facade 350,000 CHF

#### Services of Timbatec

- SIA Phase 31 Preliminary project
- SIA Phase 32 Construction project
- SIA Phase 41 Tendering and comparison of offers
- SIA Phase 51 Execution project
- SIA Phase 52 Execution
- Specialist planning for building physics
- Cost estimate

#### Architect

Bernath + Widmer Architekten AG  
8048 Zürich

#### Timber construction engineer

Timbatec Holzbauingenieure (Schweiz) AG Zürich  
8005 Zürich

#### Timber construction

Krähenbühl Holzbau AG  
8512 Thunrodr

#### Civil engineer

Dr. Deuring + Oehninger AG  
8401 Winterthur

#### Building physics

Timbatec Holzbauingenieure (Schweiz) AG Zürich  
8005 Zürich

#### Photography

Roland Bernath

#### Client

Bernath + Widmer Architekten AG  
8048 Zürich