

# New school building on the Plateau de Diesse, Prêles

2023

---



Between 2021 and 2023, a new school building made entirely of wood was constructed in Prêles. Swiss timber from the municipality was used by means of in-house procurement, Timbatec was responsible for the timber construction engineering work and building physics.

## The project

The new school building is located on the plateau of the village of Prêles, where a natural ice rink used to form during prolonged and severe cold spells. Ideally positioned on a hill, the building offers a marvellous view of the natural surroundings of the village and the recreational areas of the region. The decision to use local timber for the construction was present from the very first project meetings and exchange discussions. The experience of the Timbatec office then proved to be a great advantage in the development of the project. Currently, 1159 tons of CO<sub>2</sub> are stored in the structure of the new building, which comprises a total of around 2800 m<sup>2</sup> of school, extracurricular and office space.

## The construction

The structure is designed according to a post-and-beam principle. The load-bearing elements are made entirely of timber, including the cores of the vertical circulation, which are made of encapsulated CLT panels. A wood/wood ribbed ceiling, supplemented by a weighting layer that allows partial integration of the building services, offers a fast execution and perfectly fulfils the sound insulation requirements.

## The challenge

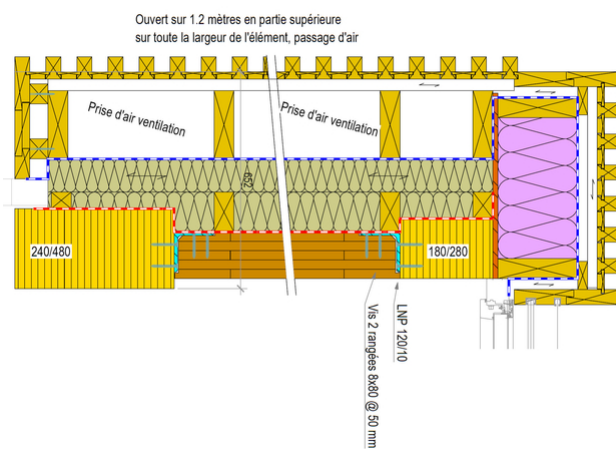
The successful integration of local timber into the construction was of great importance for the realisation of the project. A timber quality test with representative samples of the specimens found in the selected forest allowed conclusions to be drawn about the existing qualities for the realisation of the project.



Interior of a classroom.



First floor under construction.



Integration of fresh air intakes in the facade.



Wooden facade with surface treatment / Photos: luca da campo und École des Joncs in 2515 Prêles, Architektur: riforma architecture sa

### Construction Data

- Above-ground building volume: 12'700 m<sup>3</sup>
- Wooden surfaces: 3'468 m<sup>2</sup>
- Net volume of timber used: 1'093 m<sup>3</sup>

### Construction costs

- BKP 1-9: 14.3 millions CHF TTC
- BKP 214: 2.6 millions CHF TTC
- BKP 214: 205 CHF/m<sup>3</sup> TTC

### Services of Timbatec

- SIA Phase 31 Preliminary project
- SIA Phase 32 Construction project
- SIA Phase 41 Tender and comparison of offers
- SIA Phase 51 Implementation project
- SIA Phase 52 Execution
- SIA Phase 53 Commissioning
- Statics and construction
- Specialist planning for building physics
- Cost estimate
- Managing, coordinating and controlling the flow of timber from felling in the forest to assembly on site.

### Client

Commune du Plateau de Diesse  
2515 Prêles

### Architect

Riforma architecture SA  
1700 Fribourg

### Timber construction engineer

Timbatec SA ingénieur bois  
2800 Delémont

### Timber construction

Charpentes Vial SA  
1724 Le Mouret

### Wood gluing

JPF-Ducret SA  
1430 Orges

### Supply of multilayer panels

Schilliger Holz SA  
6403 Küssnacht