

Brüggläcker, Zürich Schwamendingen

2014



The Brüggläcker housing estate is a replacement building realized by the Bahoge building cooperative between the streetcar line and Funkwiesenstrasse in Zurich Schwamendingen.

The project

The housing estate consists of 3 three-storey buildings: house A with 31 apartments, house B with 32 apartments and house C with 4 maisonettes.

The construction

In hybrid construction, the interior walls and floor slabs were built in solid construction, all exterior walls in load-bearing timber construction. The floor slabs were concreted directly onto prefabricated timber elements, which also formed the face formwork for the concrete ceiling.

The challenge

For the shell construction phase, the finished insulated wooden elements had to be protected from moisture (rain and concrete ceiling). However, the execution was far less problematic than expected because the protective measures were planned from the beginning and already preassembled in the factory.



Pergola in the shell

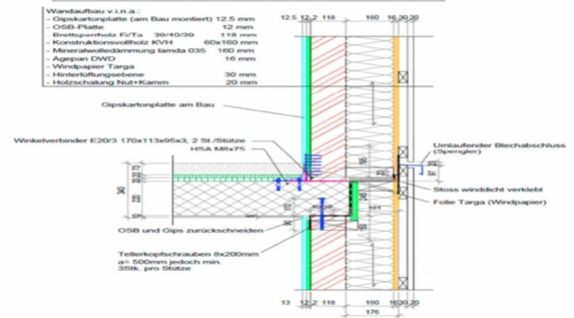
Construction Data

- 3200 m² External wall elements
- 3250 m² Roof elements

Services of Timbatec

- SIA phase 31 preliminary project
- Cost estimate
- SIA Phase 32 Construction project
- Technical site supervision and site inspections
- Structural analysis and design
- SIA Phase 41 Tendering and comparison of offers
- SIA Phase 51 Implementation project

MFH / 1.OG-2.OG Schnitt 8-8



Detail cut through supporting wooden column

Client

Bahoge
8000 Zurich

Building physics

BWS Bauphysik
8408 Winterthur

Timber construction and solid construction

Baltensberger AG
8472 Seuzach

Civil engineer

UBM Bauingenieure
8006 Zurich

Architect

Baumberger & Stegmeier AG
8004 Zurich