

MFH Schönberg East, Bern

2013



The four-story wooden building stands on the eastern outskirts of Bern. Thanks to recesses and inwardly offset balconies, small areas are created that make the object with dimensions of 37 x 16 x 12 m appear smaller and break up the silhouette.

The project

The challenge The 14 upscale apartments totaling 1,442 m² are heated with 100% percent district heating - the building is Minergie-ECO certified. Four of the apartments extend from the second floor to the attic. The property fits into a new development of seven different properties, which nevertheless form an appealing unit in their entirety.

The construction

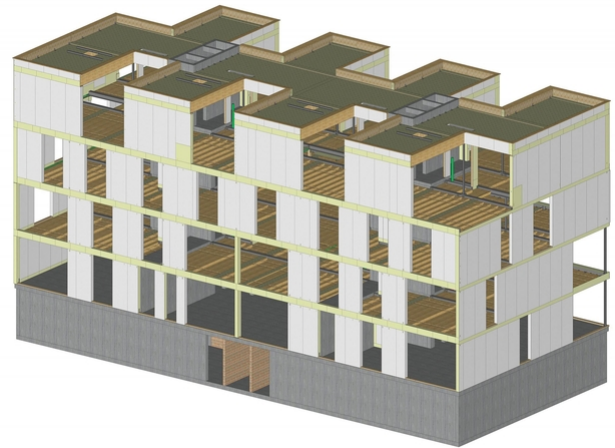
The walls are timber frame construction, with local reinforcements according to the force flows. The floor slabs are wood-concrete composite slabs. The facades were clad with ceramic panels.

The challenge

In addition to the engineering services, the 3D execution planning in CAD Work was also provided by Timbatec Schweiz AG. The geometric form of the building services installations (e.g. ventilation, plumbing, heating, etc.) was also planned by Timbatec. Another BIM (Building Information Modeling) project by Timbatec.



Facade section



3D view 1



Living room and kitchen



Cooking island

Construction Data

- Glulam: 20.7 m³
- three-layer slab: 90 m²
- Board stack: 305 m³
- Structural timber: 36.5 m³
- Steel: 50 t

Services of Timbatec

- SIA Phase 31 Preliminary design
- Technical planning building physics
- cost estimation
- Structural analysis and design
- SIA Phase 41 Tendering and comparison of offers
- SIA Phase 51 Implementation project
- 3D and 2D construction planning
- Site supervision and site inspections

Civil Engineer

Ingenta AG
3000 Bern 31

Architect

GWJARCHITEKTUR
3025 Bern

Client

GWJ Real AG
3000 Bern 25

Timber construction engineers

Timbatec Holzbauingenieure Schweiz AG, Thun
3600 Thun

Timber construction contractors

Hector Egger Holzbau AG
4900 Langenthal