

# MFH Trottenweg, Wohlen

2010

---



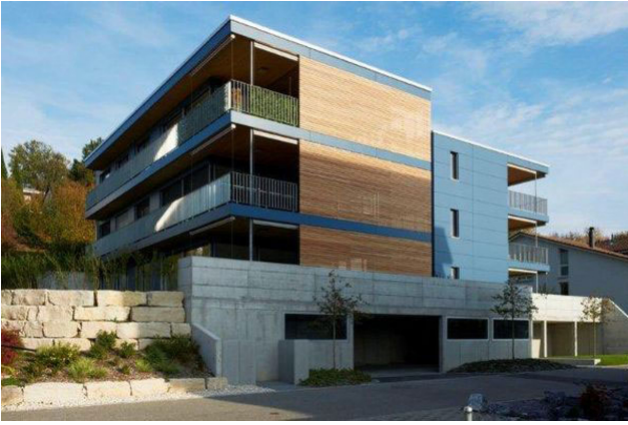
In a picturesque, elevated location on the south-western slope of Wohlen, this 6-family mini-house was realized in timber construction. The apartments are arranged as two-flats on both sides of the staircase and built in pure timber construction.

## The project

The house meets the requirements of the Minergie label. Heating and hot water run on a heat pump. Diffusion-open exterior walls and an apartment ventilation system ensure a balanced climate in all rooms at all times. The rooms are spacious, bright rooms are all connected via the balcony with the large terrace or on the ground floor with the garden. The terrace is connected to the living area by floor-to-ceiling windows, thus enlarging the living space. A dining area is well separated in the open living space. All apartments are accessed via the same central staircase core (concrete construction).

## The construction

The apartments are arranged as two-storey buildings on both sides of the staircase and are built in pure timber construction. The floor slabs, designed as ribbed slabs, rest on the interior walls as well as on columns along the facade. The increased sound insulation requirements were achieved by cement board weights, which were laid directly on the ceiling elements.



West facade



Exterior view south apartments



Interior view south apartments



Cutouts for building services installations in the rib elements of the floor slabs

### Construction Data

- Minergie standard
- 3 floors
- 6 apartments

### Services of Timbatec

- SIA phase 32 construction project
- Structural analysis and design
- SIA Phase 41 Tendering and comparison of offers
- SIA Phase 51 Implementation project
- Site management and site inspections

### Timber contractor

Hector Egger Holzbau AG  
4900 Langenthal

### Architect

Hutmacher+Kissling Architekten HTL GmbH  
5033 Buchs

### Owner

Jean Kissling  
5610 Wohlen

### Steel construction

Spannverbund Bausysteme GmbH  
8180 Bülach