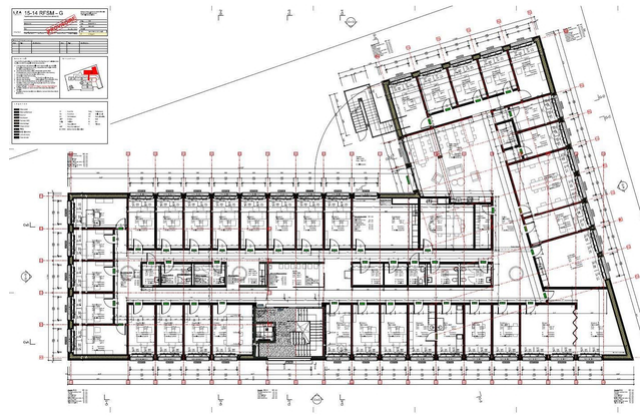


New construction RFSM Building G, Fribourg

2021



To accommodate all the vehicles of staff and visitors, the mental health network expanded its site in Villars-sur-Glâne with a parking garage. On the attic floor, 1150m² of practice rooms and meeting rooms were created in wood construction.

The project

The Fribourg Network for Mental Health (FNPG) is a medical and psychosocial competence center. The site in Villars-sur-Glâne consists of several existing buildings, which have been renovated. In addition, two new buildings complete the complex, one of which is Building G. The building is used as a parking garage on three floors. Practice rooms and other meeting rooms were created on the top floor.

The construction

Due to the hillside location, the lower three parking garage floors were built in solid construction. The top floor was erected in timber construction. The flat roof consists of horizontal glulam, which is supported by load-bearing interior walls made of cross-laminated timber panels. The insulated frame construction elements with rear-ventilated facade form the insulation perimeter and the building envelope of the attic floor.

The challenge

The challenges in this construction were mainly in the field of fire protection. Timbatec prepared the fire protection plans and carried out the fire protection quality assurance for the entire building. This also included the fire protection planning of the parking garage floors with fire alarm system and mechanical smoke extraction system.



Interior walls in cross laminated timber



Erecting the wooden construction elements



Mounting the interior walls



The shell is completed

Construction Data

- Floors: 4
- Gross floor area: 4800 m²
- Glulam 260 m³
- DUO 40 m³
- Cross laminated timber 1000 m²
- Three-layer boards 235 m²
- OSB 620 m²
- Soft fiber boards 480 m²
- GFP 1000 m²

Construction costs

- BKP 214: CHF 940,000.00

Services of Timbatec

- SIA Phase 31 Preliminary design
- SIA Phase 32 Construction project
- SIA Phase 41 Tendering and comparison of offers
- SIA Phase 51 Implementation project
- SIA Phase 52 Execution
- SIA Phase 53 Commissioning
- Structural analysis and design
- Technical planning Building physics
- Fire protection Quality assurance QSS2
- Works planning 3D and 2D

Client

Réseau Fribourgeois de Santé Mentale
1633 Marsens

Architect

LZA Architectes SA
1700 Fribourg

Timber construction engineer

Timbatec Holzbauingenieure (Schweiz) AG Bern
3012 Bern

Timber construction

ARGE Zumwald&Neuhaus AG / Vonlanthen Holzbau AG
1719 Zumholz / 3185 Schmitten

Civil engineer

sd ingénierie fribourg sa
1700 Fribourg

Construction management

LZA Architectes SA
1700 Fribourg

Photography

Vonlanthen Holzbau AG
3185 Schmitten