

Pedestrian footbridge Dählhölzli Zoo, Bern

2000



The Aare burst its banks in May 1999 in the course of a flood of the century and also caused considerable damage to the zoo.

The project

Since the damage was of varying severity, various measures were also taken. In the area of the pelicans, beavers, otters and the lynx, a footbridge with viewing platforms was planned, which should also survive subsequent floods. The footbridge The approximately 140 m long footbridge was made of single-span girders of 10 m length. At 2 places platforms protrude about 10 m above the water.

The construction method

In order to protect the substructure from further flood damage, it was concreted as supports and, at the jetty - platform connection, as a slab. The glulam beams (14 x 43 cm) were attached to these at a center distance of 59 cm by means of steel angles. The floor is covered with 50 mm larch planks, which have been provided with a non-slip layer in the middle of the upper side. The whole construction is surrounded with air on all sides, so that it can dry again after each rain.



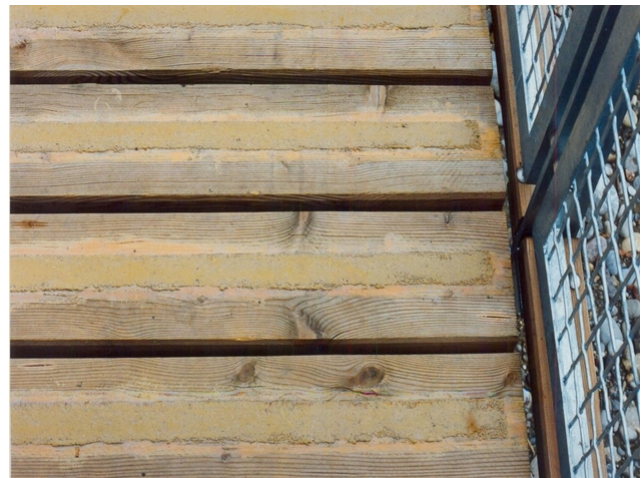
Pedestrian path in operation



The beginning of the bridge



Stock



Bridge detail

Construction Data

- Glulam: 75 m³
- formwork larch: 680 m²
- Length: 140 m Width sidewalk: 4.0 m

Services of Timbatec

- Structural analysis and design
- SIA phase 41 tendering and comparison of offers
- Site supervision and site inspections

Timber construction engineers

Timbatec Holzbauingenieure Schweiz AG, Thun
3600 Thun

Client

Civil Engineering Office of the City of Bern
3011 Bern

Architect

ANB Architekten AG
3000 Bern

Civil engineer

Weber & Brönnimann AG, Ingenieure & Planer
3007 Bern

Timber contractor

Flückiger Holzbau
3073 Gümligen